

Skyfile Installation Instruction in Mini-M (Suitable for Win2000 and WinXP)

- 一. Please make sure that Mini-M is running properly, using 9 pin serial cable to connect cradle COM port and your computer's COM port.
- 二. **ADD MODEM**
 1. Open "Control Panel" from start menu of your computer, and double click "Phone and Modem Options", shows as Figure1.

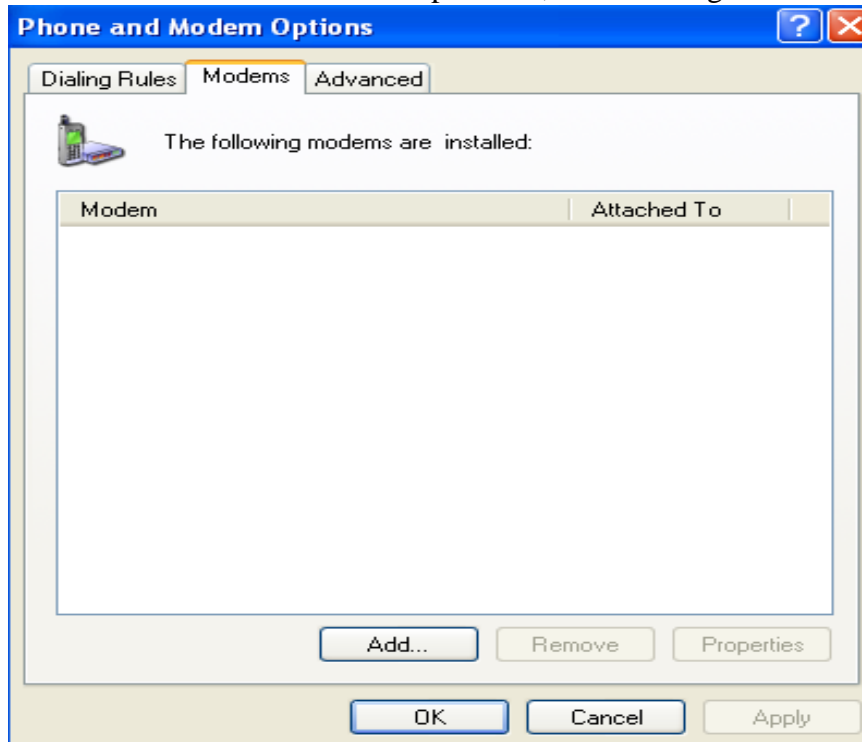


Figure1

-
2. Click "Modems", and then click "Add" button at the bottom to add Modem, shows as Figure2:



Figure2

3. Select “Don’t detect my modem, I will select it from a list” radio button, and click “Next”, shows as Figure3:

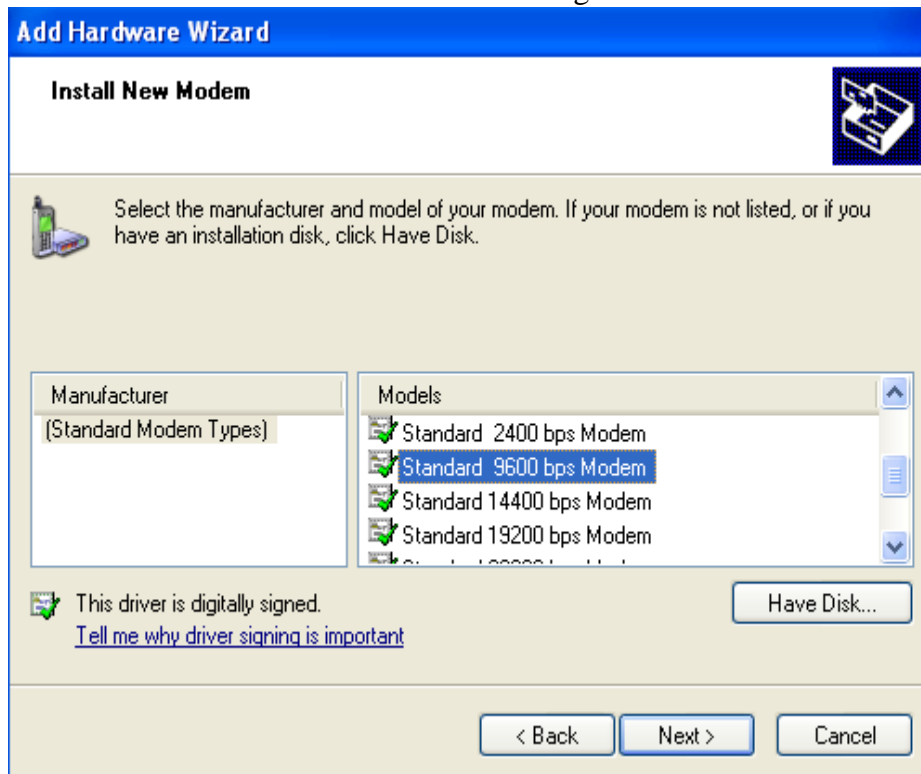


Figure3

4. Select “Standard 9600 bps Modem”, and click “Next” appear Figure4:

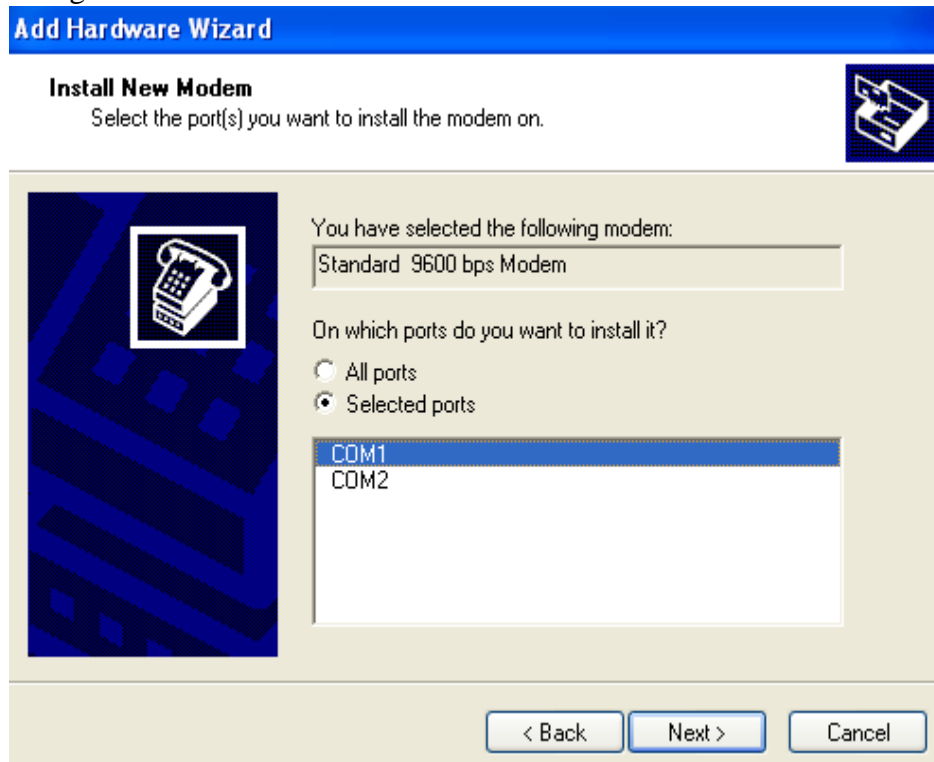


Figure4

5. Select the COM ports that the serial cable connects to your computer, and click “Next” , shows as Figure5, click “Finish” complete the installation process。

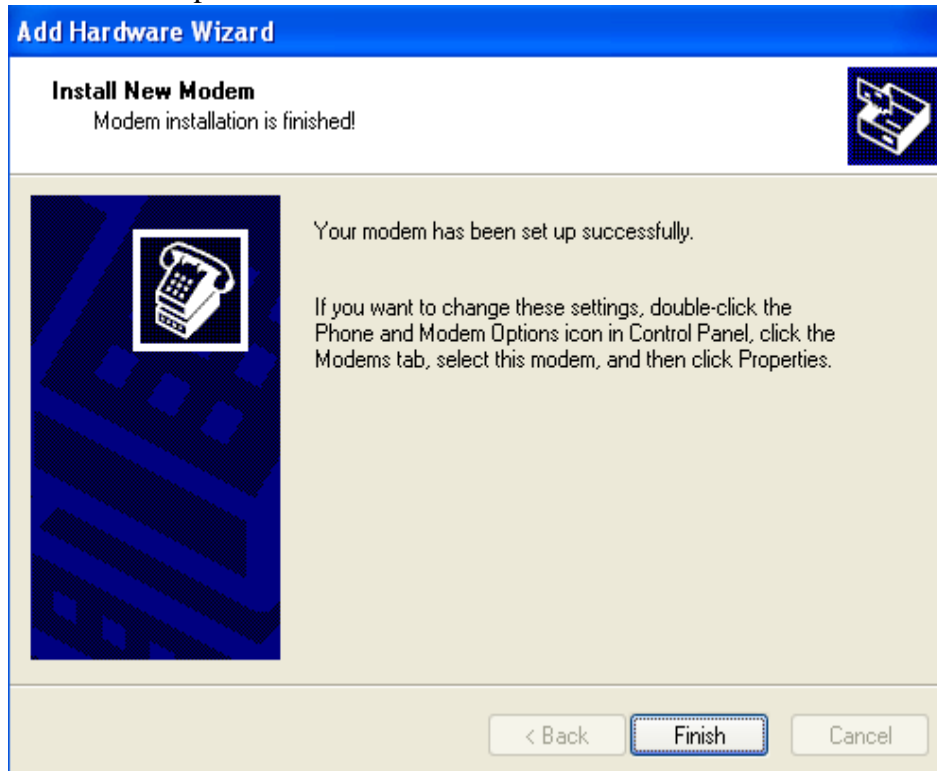


Figure5

三. HANDSET CONFIGURATION

1. Clicking “2nd” key on the handset, and then “1 MENU” key, moving cursor to “Config”, clicking “OK” key。
2. Moving cursor to “Data Band”, clicking “OK” enter next screen。
3. Select “9600”, and then “OK” finish。

四. Skyfile Installation and Configuration

1. Run Skyfile “Setup.exe” from CD, completing the installation process according to the prompts。
2. After installation, double click Skyfile tab on the desktop of your computer to open Skyfile email interface。
3. Clicking “Configuration” tab on the top of the interface, shows as Figure6:

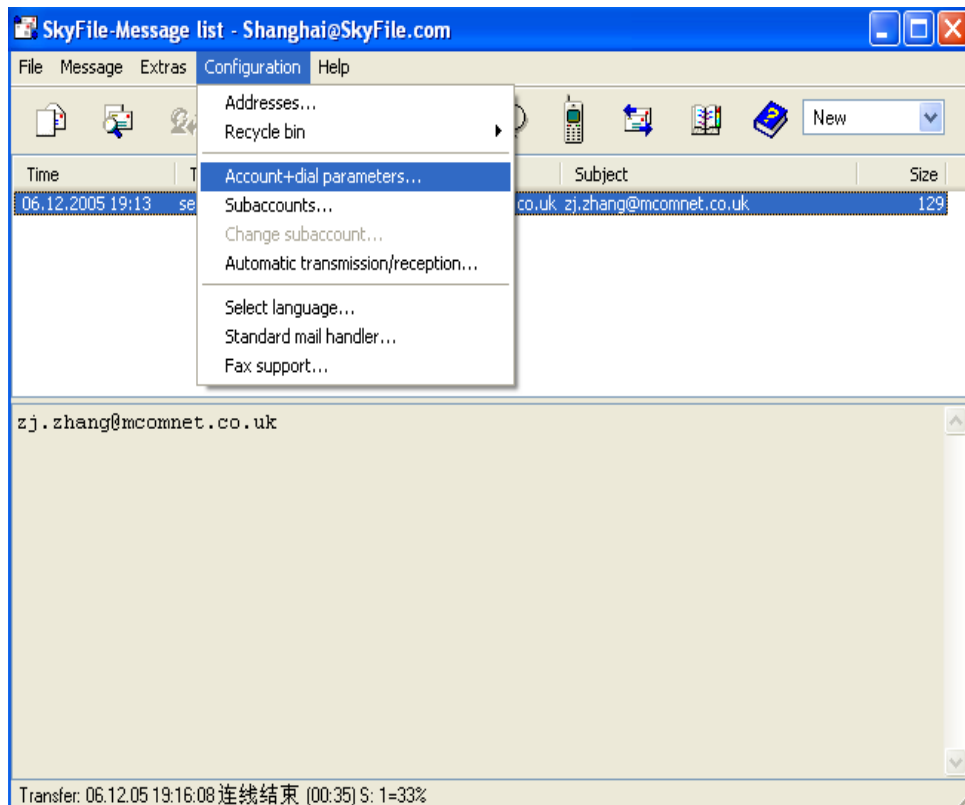


Figure6

4. Click “Select language”, and then chose your preferred lanuage, shows as Figure7:



Figure7

5. Click “Configuration” on the top of the menu , and then click “Account+dial parameters” to enter next window shows as Figure8:

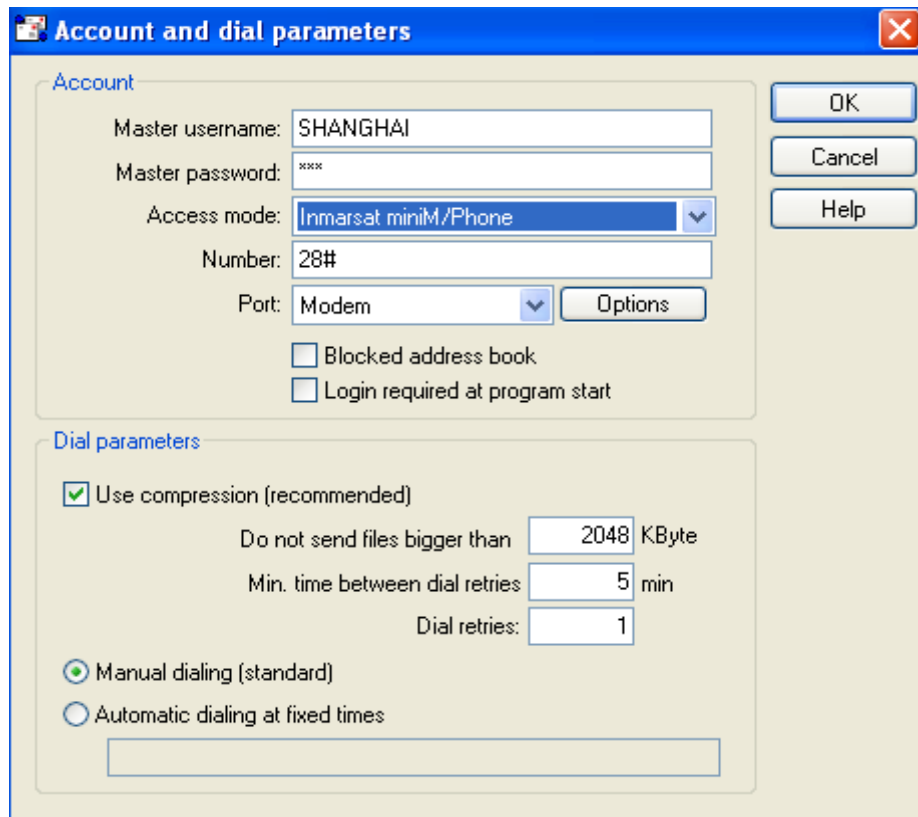


Figure8

6. Enter the “Master username” and “Master password” which you applied from your ISP (Here used SHANGHAI is for testing). Select the satellite equipment you used (Mini-M or Fleet-33) in the “Access mode” shows as Figure9:

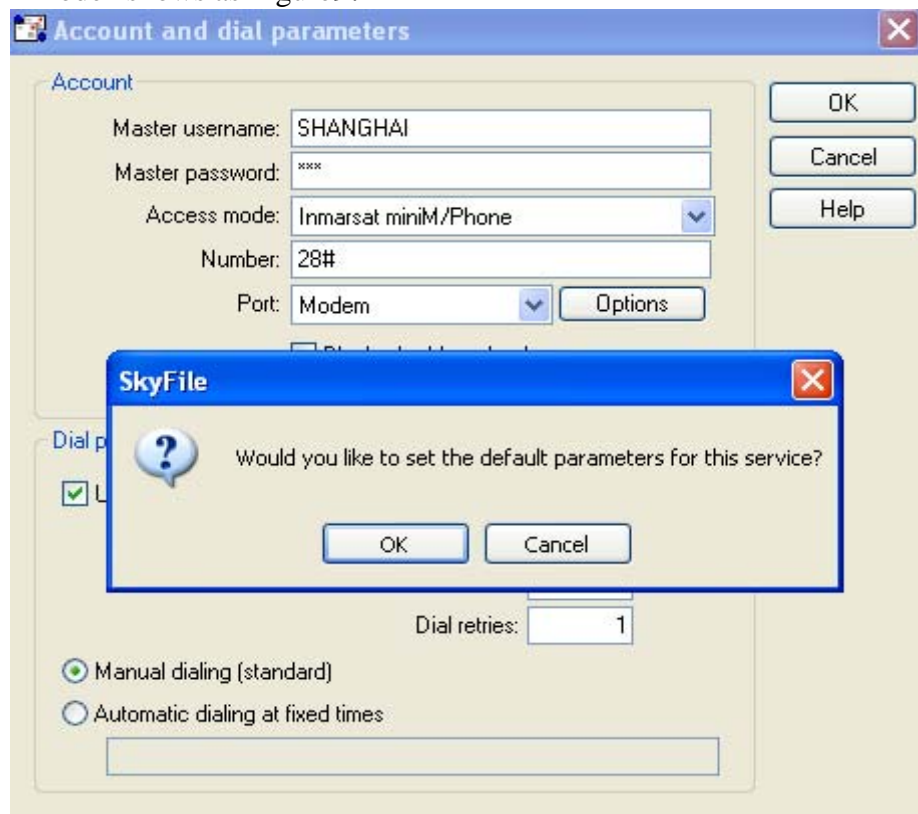


Figure9

7. Click “OK” appear Figure10 as following:

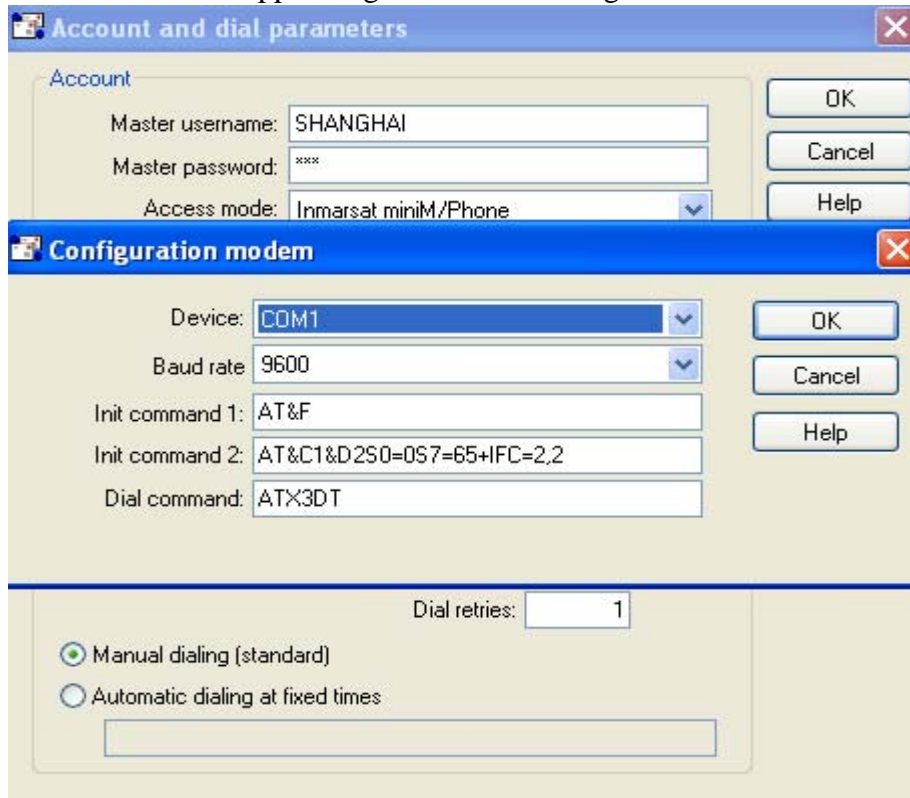


Figure10

8. Click “OK” twice to complete “Account + dial parameter” configuration:

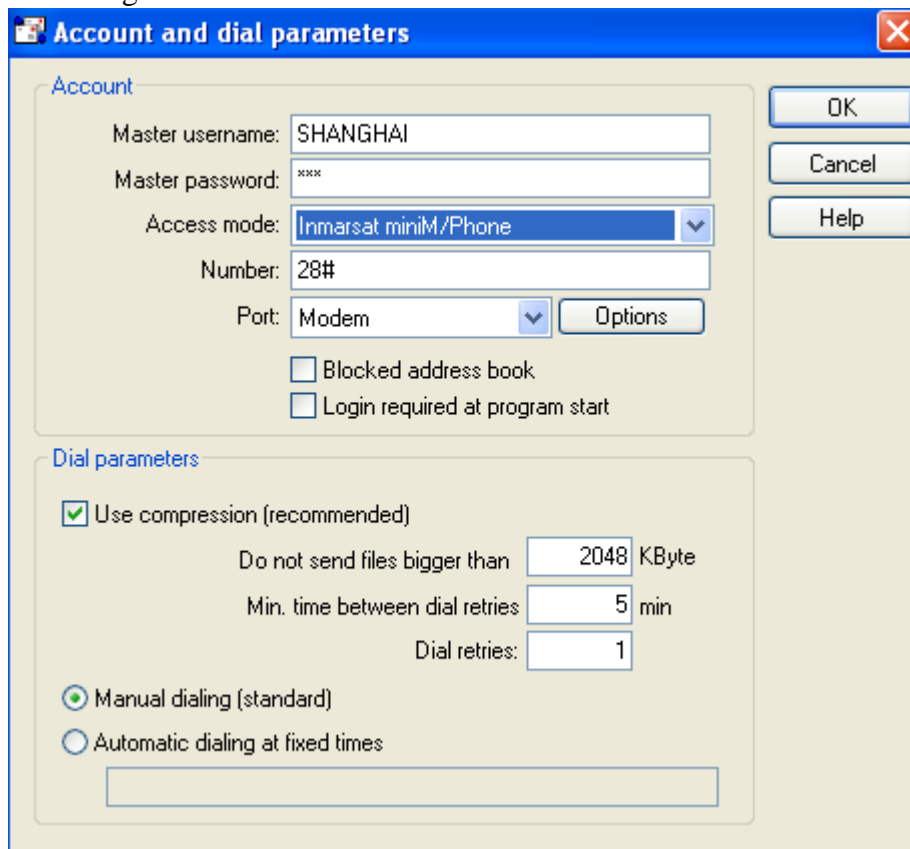


Figure11

9. You are now able to create new email, please remember to click F9 in order to send email out.

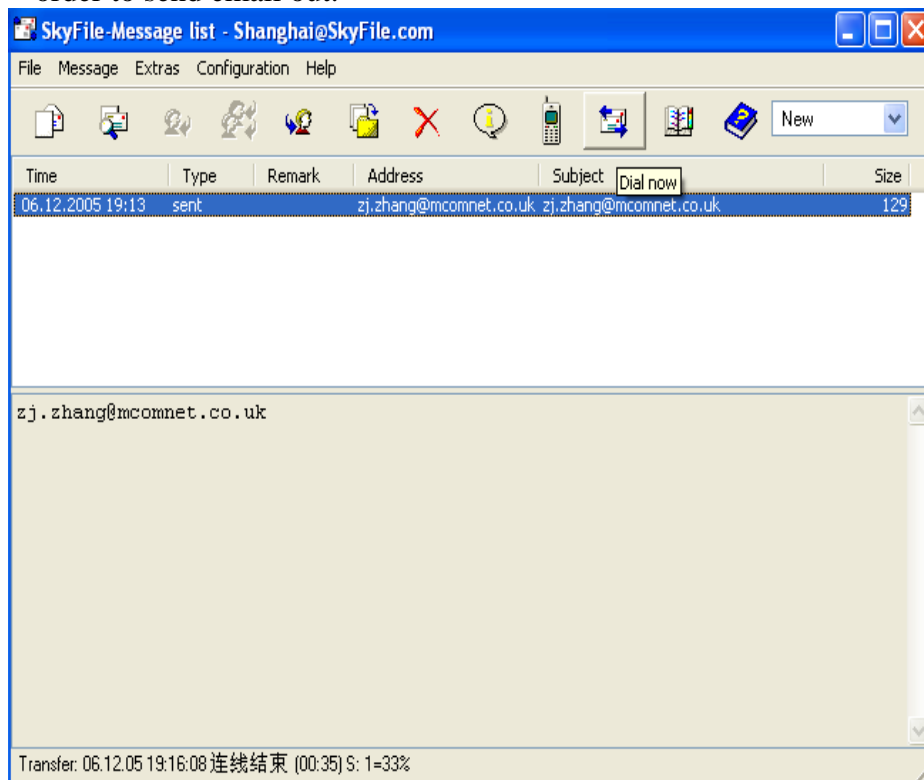


Figure12