

## Skyfile Installation Instruction in Fleet-33 (Suitable for WinXP under MPDS mode)

- 一. Make sure the Fleet-33 running at Ready status, connecting TT-3038 X9 port and computer via a Straight-through RJ-45 cable.
- 二. **Add Network Connection**
  1. Open “Control Panel” on the computer, and double click “Network Connection”, shows as figure1:



Figure1

- 
2. Click “Next”, figure2 appears:

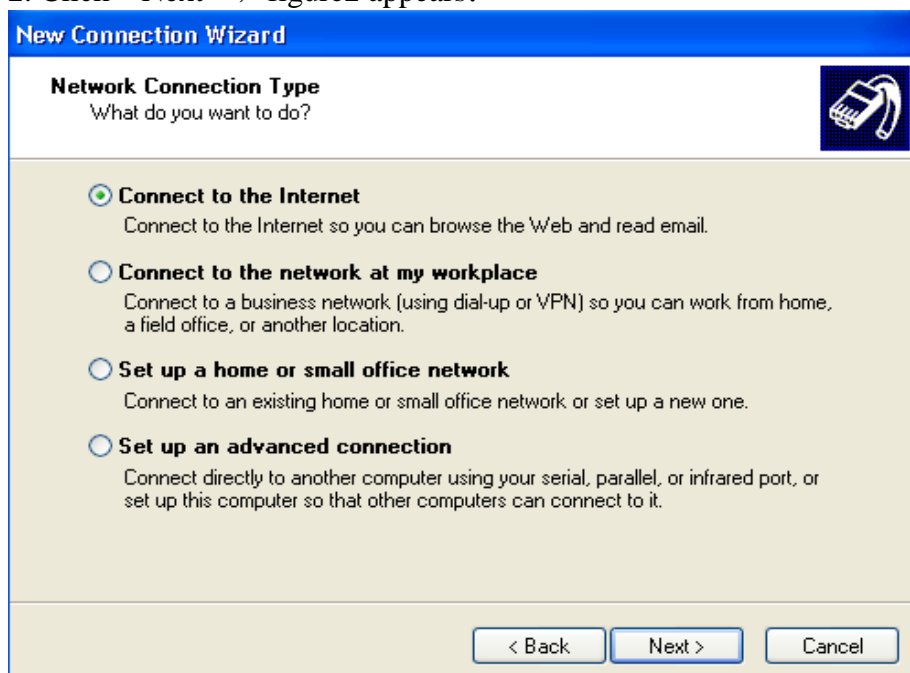


Figure2

3. Select “Connect to the Internet”, and click “Next”, shows as Figure3:

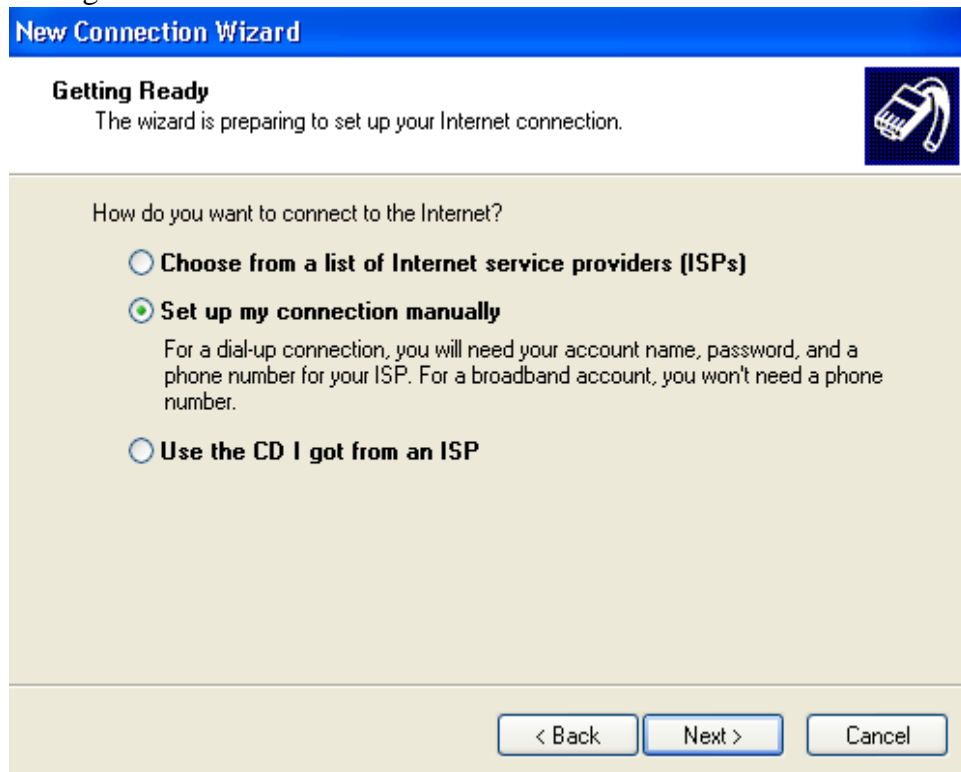


Figure3

4. Select “Set up my connection manually”, and click “Next”, Figure4 appears:

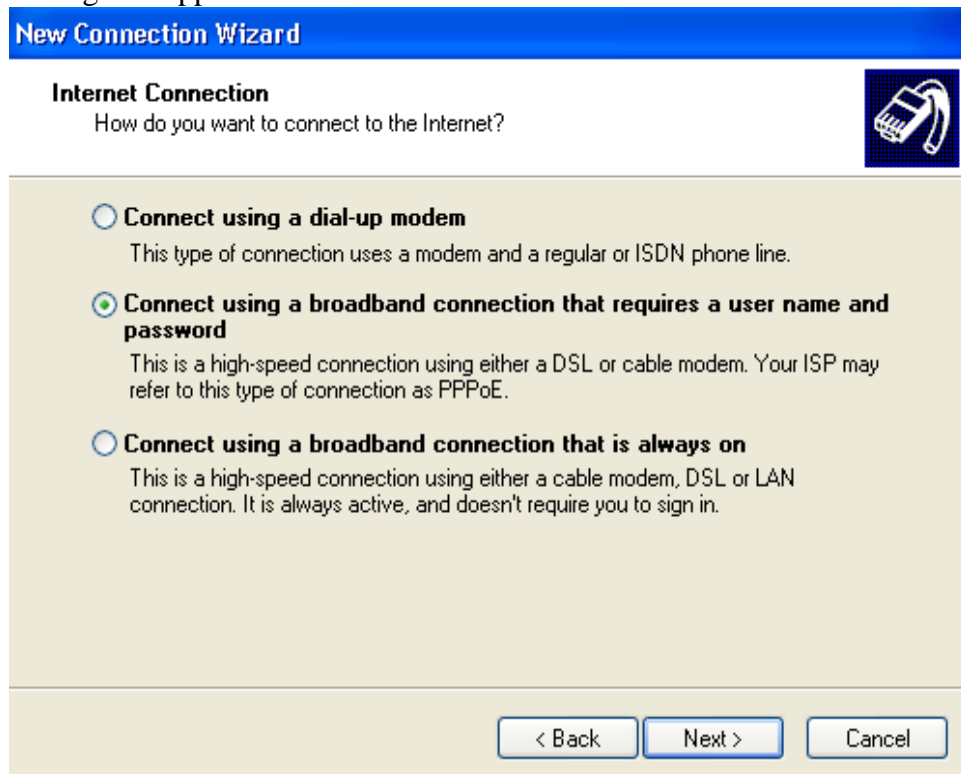
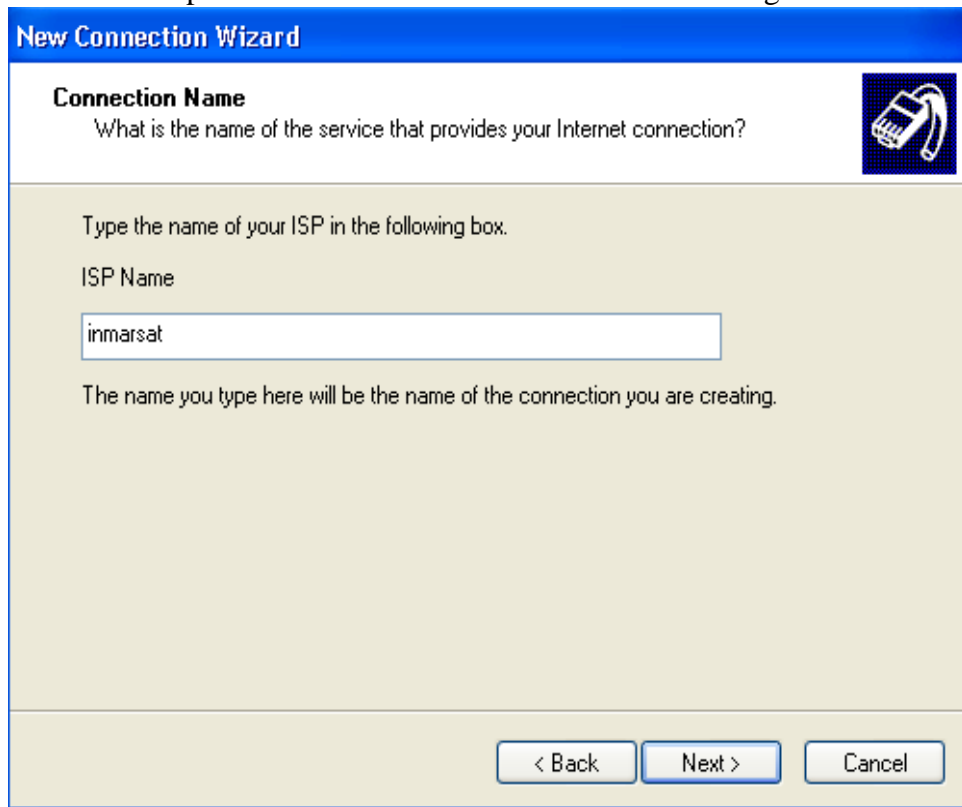


Figure4

5. Select “Connect using a broadband connection that requires a user name and password” , and click “Next” shows as Figure5:



The screenshot shows a window titled "New Connection Wizard" with a blue header bar. Below the header, the title "Connection Name" is displayed in bold. The main text asks, "What is the name of the service that provides your Internet connection?". To the right of this text is a small icon of a mobile phone. Below the question, there is a sub-instruction: "Type the name of your ISP in the following box." followed by the label "ISP Name". A text input field contains the text "inmarsat". Below the input field, a note states: "The name you type here will be the name of the connection you are creating." At the bottom of the window, there are three buttons: "< Back", "Next >", and "Cancel".

Figure5

6. Enter a name (e.g. Inmarsat) in the blank, and click “Next” shows as Figure 6:



The screenshot shows a window titled "New Connection Wizard" with a blue header bar. Below the header, the title "Internet Account Information" is displayed in bold. The main text asks, "You will need an account name and password to sign in to your Internet account." To the right of this text is a small icon of a mobile phone. Below the question, there is a sub-instruction: "Type an ISP account name and password, then write down this information and store it in a safe place. (If you have forgotten an existing account name or password, contact your ISP.)". Below this, there are three text input fields labeled "User name:", "Password:", and "Confirm password:". Below the input fields, there are three checkboxes with their corresponding labels: a checked checkbox for "Use this account name and password when anyone connects to the Internet from this computer", a checked checkbox for "Make this the default Internet connection", and an unchecked checkbox for "Turn on Internet Connection Firewall for this connection". At the bottom of the window, there are three buttons: "< Back", "Next >", and "Cancel".

Figure6

7. Enter a value (e.g. MPDS) in “User name” and “Password” blank., and click “Next” , Figure 7 appears :



Figure7

8. Click “Finish” complete this stage.

### 三. Handset Configuration

1. Click “Menu” key on the handset, and then move the cursor to “Super User”, clicking “OK” key. Enter “12345678” when screen prompt to enter “SuperUser PIN”. Click “OK” key to enter next screen.
2. Move cursor to “Band Rate”, and click “OK” to enter next screen.
3. Select “115200”, and click “OK”。
4. Click “Exit” once to return to previous screen, and then move cursor to “Routing”, clicking “OK” key to enter next screen.
5. Move cursor to “Ethernet”, and click “OK” to enter next screen.
6. Click “\*” and “#” at the bottom of handset, making sure that the screen display “MPDS/\*9#” (please confirm the “MPDS” under “RS232” item on previous screen displays “MPDS/9” )。Click “Exit” several times to quit to “Ready” status。

### 四. Skyfile Installation and Configuration

1. Run “ Setup.exe ” under the Skyfile CDROM , complete the installation according to relevant prompts。
2. After completion, double click Skyfile tag on the desktop to open Skyfile mail system。

3. In Figure8, clicking “Configuration”, and then click “Account + dial parameters...” to enter next screen:

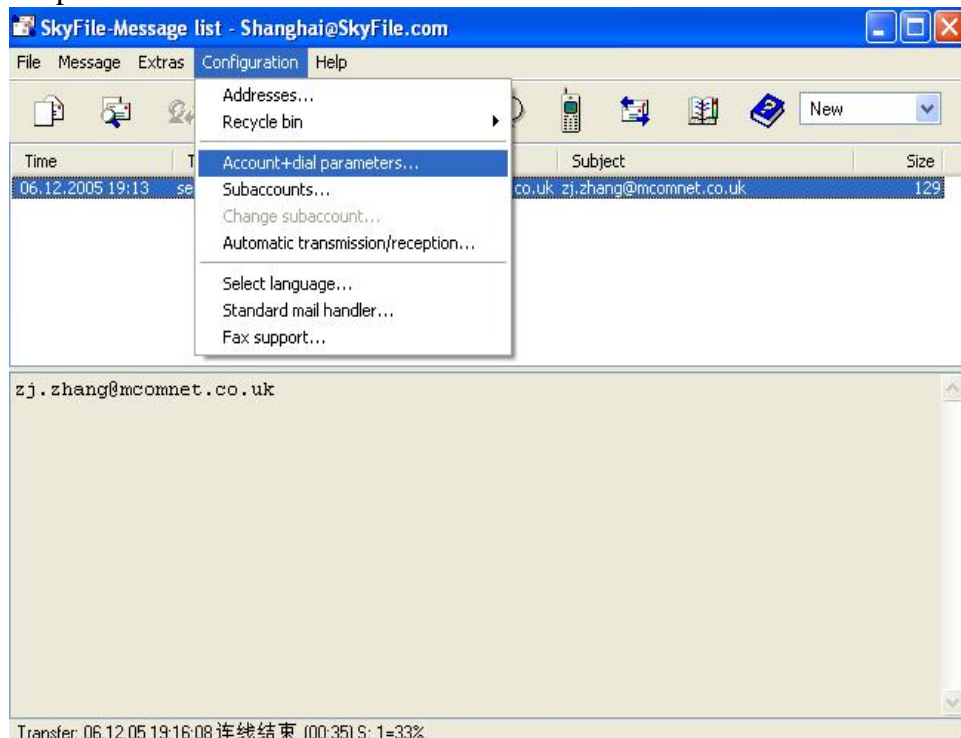


Figure8

4. In Figure9 below, entering your “Username” and “Password” which provided by your ISP (Here used our own username “Shanghai”). Select “Inmarsat Fleet77 MPDS” in Access mode, and then click “OK” to “set the default parameters for this service”.

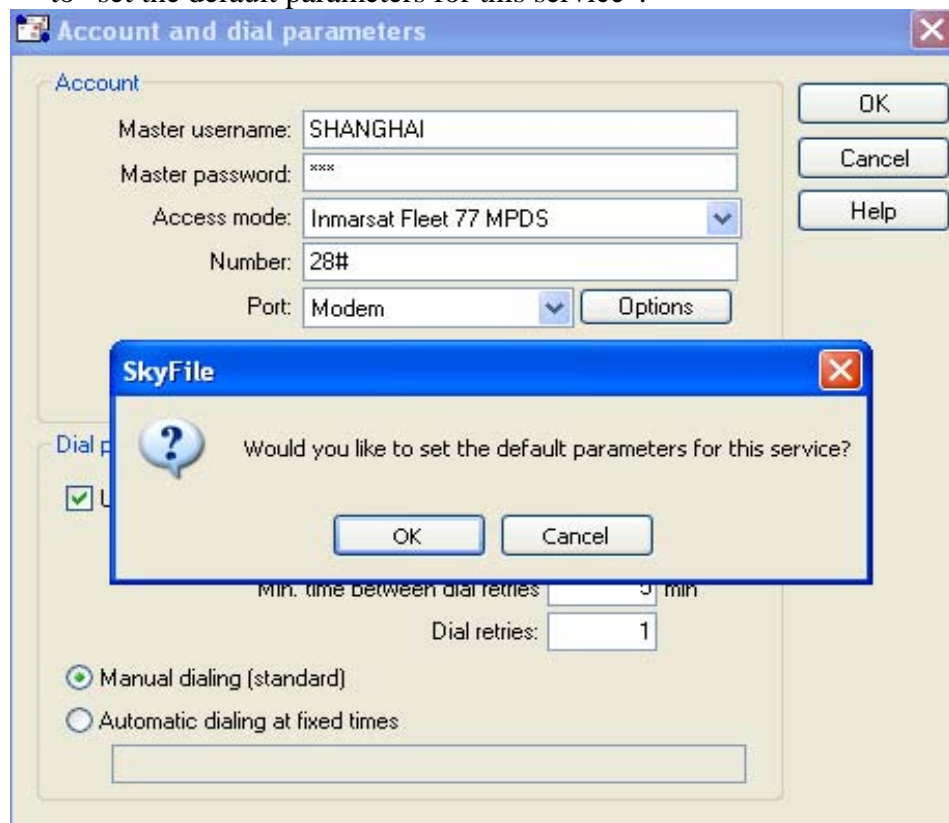


Figure9

5. Enter your Username and Password again in Figure10 below, and click “OK”.

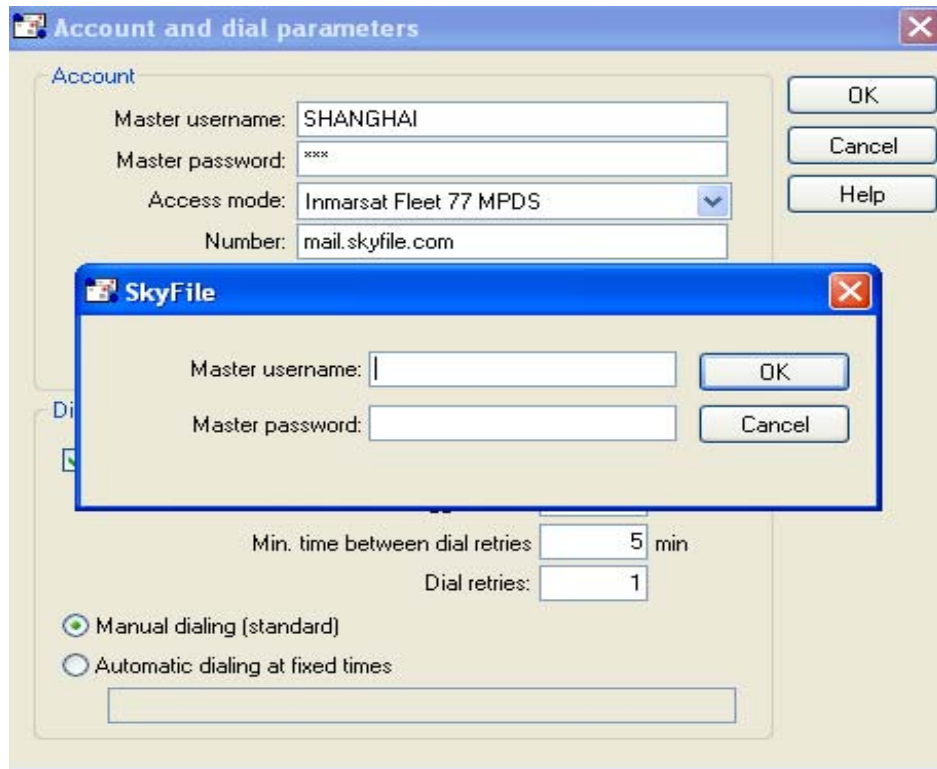


Figure10

6. Select “Inmarsat” from “RAS connection” which you just established, and enter “Inmarsat” as RAS password, shows as Figure11:

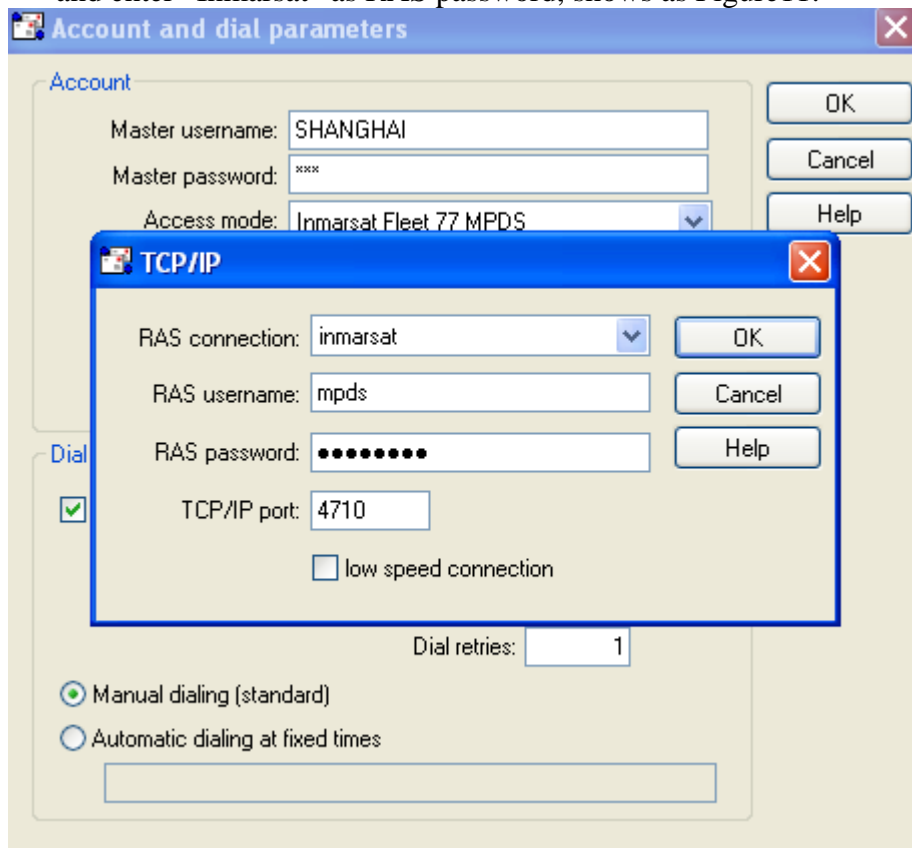


Figure11

9. Click “OK” to return to “Account and dial parameters” screen, and click “OK” to complete the configuration.

**Account and dial parameters**

**Account**

Master username: SHANGHAI

Master password: \*\*\*\*

Access mode: Inmarsat Fleet 77 MPDS

Number: mail.skyfile.com

Port: TCP/IP

Blocked address book

Login required at program start

**Dial parameters**

Use compression (recommended)

Do not send files bigger than 2048 KByte

Min. time between dial retries 5 min

Dial retries: 1

Manual dialing (standard)

Automatic dialing at fixed times

OK

Cancel

Help

Options

10. You can create new email now, please remember to click F9 in order to send the email out.