

Technical Notification

Date: 2 - 2006

Document No.: 95-123063

New software ver 1.02 for EXPLORER™ 500

Subject:

Please be informed of the new software version 1.02 released for EXPLORER™ 500. This upgrade is intended solely for terminals with software version 1.00 or higher.

Priority:

- High: It is highly recommended to apply this change / initiative to all system(s)
- Mandatory for use with the I4-F2 satellite (AOR-W)

Changes from ver. 1.01 to 1.02:

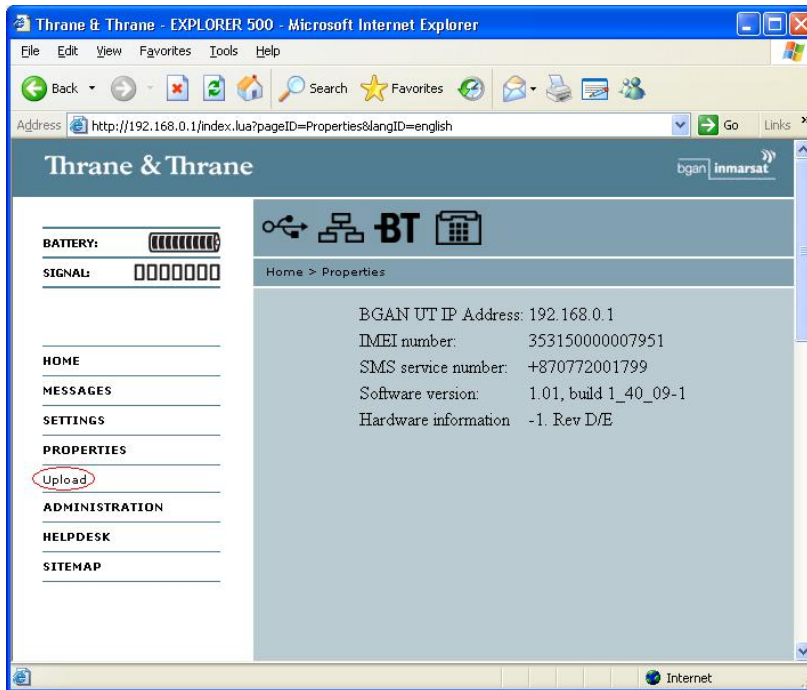
- Bug fix –
 - Various critical fixes related to stability
 - Diagnostic report in Web interface
 - Configuration of Rj11 interface from Web interface
 - Configuration settings from Web interface
- New features –
 - Inmarsat I4-F2 satellite supported (AOR-W)
 - Manual start & stop of connections from Web interface
 - Phone book available in Web interface (manual page 68)
 - Configuration of the Bluetooth devices from Web interface (manual page 83)
 - IP header compression
- Manual –
 - New Manual version K, supporting software version 1.02

Action:

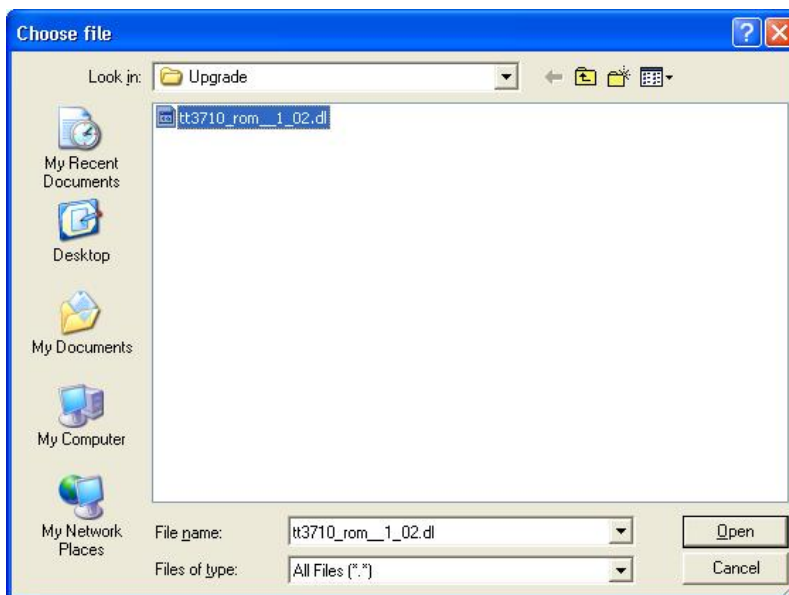
Download the file 'EXPLORER500_V1.02.zip' located at Thrane & Thrane extranet <http://extranet.thrane.com/Support.aspx> and save / extract it on your hard disk.

The following will describe the procedure for installing Ver. 1.02 on EXPLORER™ 500.

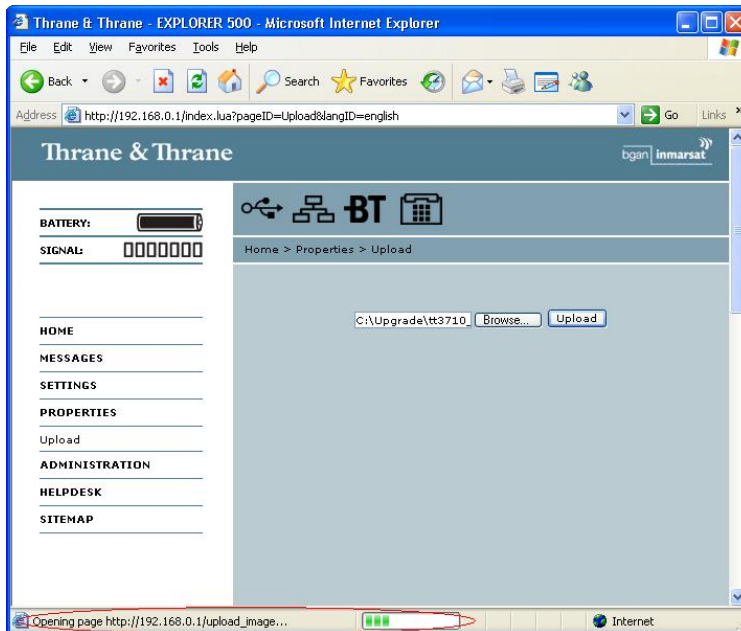
1. Make sure the EXPLORER™ 500 is switched on and connect the Ethernet cable to your PC.
2. Open your web-browser and open the Web Interface of the EXPLORER™ 500 at address <http://192.168.0.1/>
3. Select 'Properties' and 'Upload'



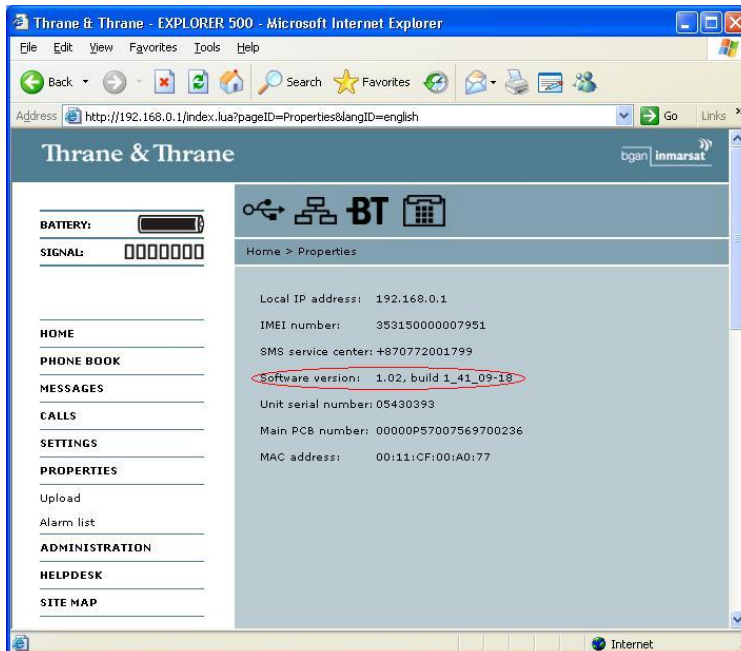
4. Select 'Browse' and locate the file 'tt3710_base_1-02.dl' and chose 'Open'.



5. Choose 'Upload' and verify that the Upload is in progress like below.



6. The terminal will reboot. Select again the address <http://192.168.0.1/> and verify the software version by clicking on 'Properties'.



End of procedure.

Thrane & Thrane
After Sales Service